

A. Read the passage.

Emperor penguins are the largest members of the penguin family. They have black feathers, a light-coloured belly, black webbed feet, and a black bill with a yellow-orange streak. They live in Antarctica, which is located in the southern hemisphere.



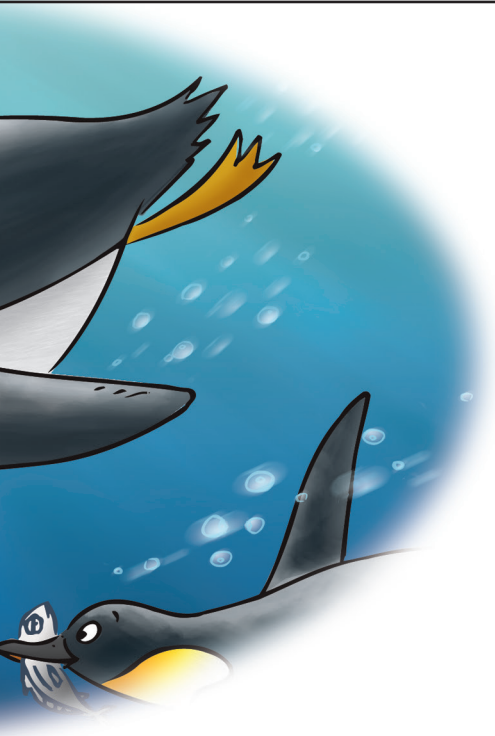
Emperor Penguins

The female emperor penguin lays only one egg in a year. She then leaves to gather food while the male penguin watches over the egg. The father has a special layer of feathered skin, called the brood pouch, that keeps the egg safe and warm. For 65 days, the male does not eat anything, as he protects the egg from icy temperatures and harsh winds.

Two months later, after the chick has hatched, the mother returns with food. She takes over protecting the newborn in her brood pouch. It continues to be an important job because if the chick falls out, it could freeze to death in two minutes. Eventually, the baby penguin can be left alone and even hunt for its own food.

Emperor penguins have an interesting way of adapting to their cold environment. Their survival depends on teamwork. They huddle together in a huge group and take turns moving from the cold outer edge of the circle into the centre, where they can warm up. The emperor penguin is certainly a peculiar bird.





B. Find out what is wrong with these sentences. Rewrite them correctly on the lines.

1. The emperor penguin has a yellow-orange bill with a black streak.

2. Emperor penguins live in the northern hemisphere.

3. The brood pouch keeps the father penguin safe and warm.

4. A chick could freeze to death within an hour if it falls out of its mother's brood pouch.

5. The penguins huddle together in small groups.

C. Read the clues and complete the crossword puzzle with words from the passage.

strange, odd

continuing to live

one half of the Earth

changing

the surroundings

rough, severe

guarding, defending

stand close together

finally



D. Using facts about penguins, write an acrostic poem about this peculiar creature.

P	_____
E	_____
N	_____
G	_____
U	_____
I	_____
N	_____
S	_____

E. Use the grid to solve the riddle.

	1	2	3	4	5
A	c	z	b	f	p
B	e	i	u	o	v
C	j	n	h	a	t
D	y	w	d	q	g
E	s	x	r	l	m



What do penguins order for lunch?

Answer: